



Umpiring Excellence!

All umpires at all levels strive to achieve excellence. The game of netball has speed, athleticism, and with that comes a level of physical contest that presents challenges for umpires.

An umpire's role is to facilitate a fair and enjoyable game for all participants, including players, coaches, administrators, spectators and other officials. The contribution umpires make plays a large part in the success of the game for all.

To continue the progress of netball and to maintain New Zealand's position as a leading nation, umpires must, along with all facets of the game, develop and push boundaries.

"Umpiring Excellence" aims to assist umpire personnel at all levels and stages to understand the requirements and processes involved in umpiring in New Zealand and Internationally.

All the best to every umpire in New Zealand as you strive to achieve excellence and contribute to the development and enjoyment of netball for all.

Framework for Umpiring Excellence in New Zealand

Achieving Umpiring Excellence	6
Pathways for Umpires	7
Pathways for Panels/Practical Assessors	8

Assessment and Accreditation

1. International Umpires Award (IUA)	9
Procedures and Information	
Pre-requisites	
Key Performance Indicators	
Testing panels	
Endorsements	
2. New Zealand A Umpire Award	10
Procedures and Information	
Pre-requisites	
Screening	
Key Performance Indicator	
3. New Zealand B Umpire Award	12
Procedures and Information	
Pre-requisites	
Screening	
Key Performance Indicators	
4. New Zealand C Umpire Award	14
Procedures and Information	
Pre-requisites	
Screening	
Key Performance Indicators	
5. New Zealand Award Umpire	16
Procedures and Information	
Pre-requisites	
Screening	
Key Performance Indicators	
6. Retired/Inactive NZ Umpires	17
7. Regional Umpire Award	18
Procedures and Information	
Pre-requisites	
Screening	
Key Performance Indicators	
8. Centre Umpire Awards	20
Procedures and Information	
Pre-requisites	
Screening	
Key Performance Indicators	
9. Recognition of Prior Learning	22

Umpire Panels

1. New Zealand Umpire Panel (NZUP)	23
Terms of Appointment	
Qualifications	
Skills required	
Key Functions	
2. New Zealand Theory Panel (NZTP)	24
Moderators	24
Terms of Appointment	
Qualifications	
Skills required	
Key Functions	
Examiners	25
Terms of Appointment	
Qualifications	
Skills required	
Key Functions	
Markers	26
Terms of Appointment	
Qualifications	
Skills required	
Key Functions	
3. Regional Umpire Panels	27
Term of Appointments	
NZ Regional Practical Panel	27
Qualifications	
Skills required	
Key Functions	
Regional Practical Panel	28
Qualifications	
Skills required	
Key Functions	
Centre Umpires Panel	29
Qualifications	
Skills required	
Key Functions	

Theory Examinations

1. NZ and Regional Theory	30
Procedures and Information	
Applications and Fees	
Pre-requisites	
Netball New Zealand Responsibilities	
Region Responsibilities	
Supervisors Responsibilities	
Centre Responsibilities	
2. Centre Test Banks	31
Procedures and Information	
3. Reader-Writer	32
Use of a reader and/or Writer or other Special Conditions	

Training and Education

- | | |
|---|----|
| 1. Umpire Coaching Development | 33 |
| Procedure and Information | |
| Netball New Zealand Responsibilities | |
| Netball New Zealand Umpire Coaching Development Guide | |
| 2. International Match Protocols for Netball Umpires | 37 |
| 3. Fitness Testing for Umpires | 41 |
| Procedures and Information | |
| Netball new Zealand Responsibilities | |
| Regional/Centre Responsibilities | |
| Fitness Tester Responsibilities | |
| Dates for Fitness Testing | |
| 4. Umpiring Resources | 42 |

High Performance

- | | |
|--|----|
| 1. National Umpire Squads | 43 |
| Selection Criteria | |
| Selection Process | |
| Squad Coaches | |
| Squads Co-ordinator | |
| 2. International Appointments | 45 |
| 3. National Appointments | 46 |
| 4. High Performance Umpire Pathway | 47 |
| 5. High Performance Structure Overview | 48 |

Umpire Appeals 49

Appendices

- A. New Zealand A Umpire Award & Endorsement Report
- B. New Zealand B Umpire Award & Endorsement Report
- C. New Zealand C Umpire Award Report
- D. New Zealand Regional Umpire Qualifying Award & Endorsement Report
- E. New Zealand Centre Umpire Qualifying Award & Endorsement Report
- F. Umpire Key Performance Report
- G. Umpire Assessment & Coaching Questionnaire
- H. New Zealand Umpires Panel (NZUP) Application Form
- I. Netball New Zealand Umpire Theory Panel (NZTP) Application Form
- J. Regional Umpires Panel Application Form
- K. Regional NZ Practical Panel Notification Form
- L. Centre Umpires Panel Application Form
- M. Centre Practical Panel Notification Form
- N. Netball New Zealand Umpire Theory Supervisor & Venue Notification Form
- O. Netball New Zealand Umpire Theory Examination Application Form
- P. Netball New Zealand Theory - Regional and NZ Sample Questions
- Q. Netball New Zealand Centre Umpire Test Banks
- R. Netball New Zealand Events Umpire Panel Individual Application Form
- S. Netball New Zealand Umpire Fitness Testing Guidelines
- T. Regional Fitness Tester Notification Form
- U. Netball New Zealand Umpire Fitness Test Results Summary
- V. Regional Umpire Recommendations for National Events
- W. Application Form for Recognition of Prior Learning
- X. Umpire Appeal Form

Framework for Umpiring Excellence in New Zealand

Achieving Umpiring Excellence

Netball New Zealand strives to have Umpiring Excellence by having the following:

Assessment and Accreditation

- A pathway for netball Umpires that is seen as fair and transparent
- An increase in the number of accredited Umpires at all levels.

Education and Training

- Quality national umpire development programmes which provide umpires, assessors, coaches and tutors with the ability to achieve their potential at the highest possible level

High Performance

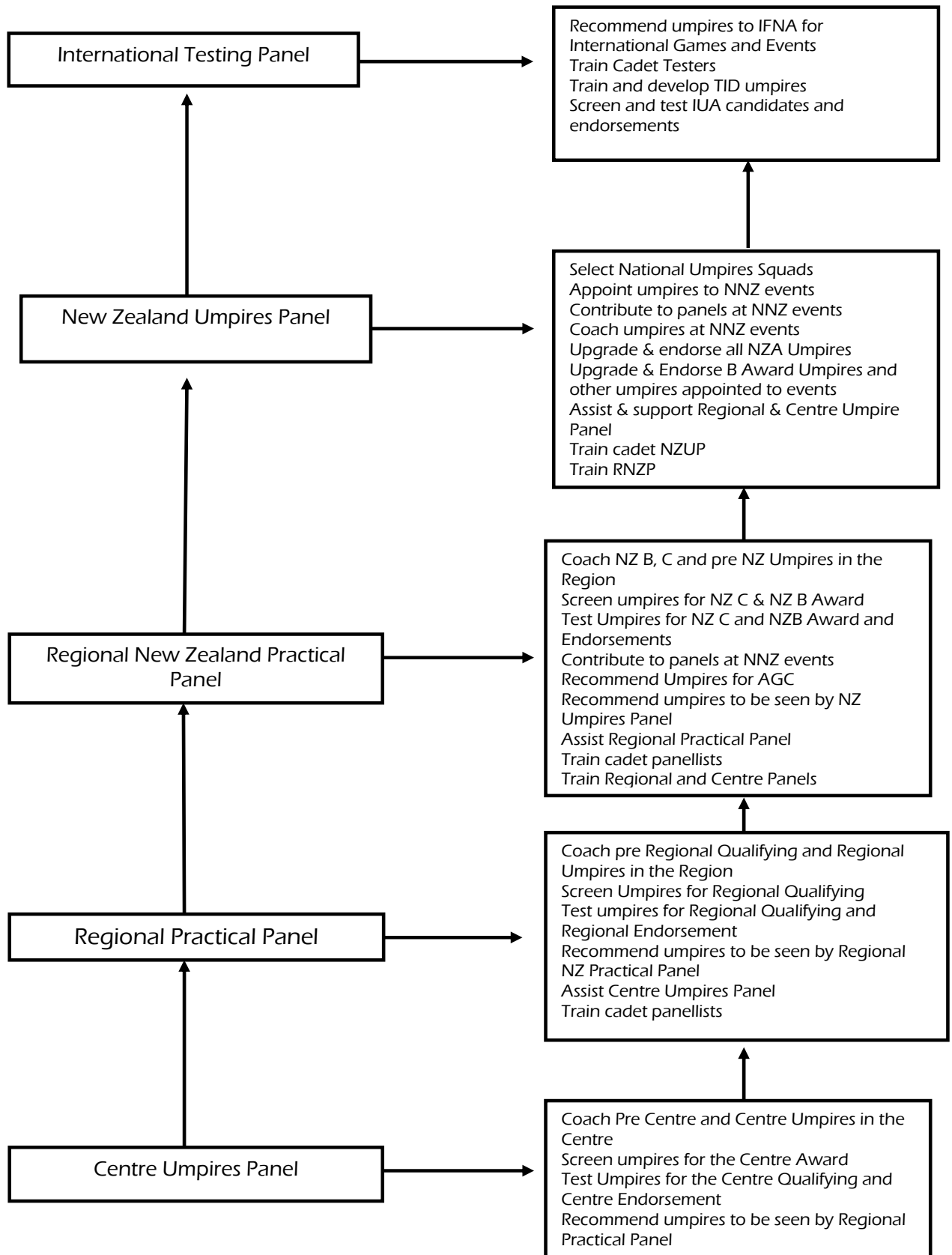
- The best umpires in the world.
- An increase in the number and capability of IUA umpires from NZ

PATHWAYS for UMPIRES

	NZ Young Umpires Award	Centre Award	NZ Regional Award & Endorsement	NZ C Award & Endorsement	NZ Award & Endorsement	NZ B Award & Endorsement	NZ A Award & Endorsement	IUA
Umpiring Level	Centre/School matches	Centre competition SS fixtures Junior tournament SS Regionals	Region/Centre Comps Regional Age - Group Tournament SS Regionals NZ U17	NNZ events Region/Centre Comps	Region/Centre Comps SS Regionals	NZ Champs NZAGC Region/Centre Competition	NZ Champs Region/Centre Competition	International Tests World Champs World Youth Champs Commonwealth Games Trans Tasman Champs
Pre requisite	Young Umpires Programme Theory test Bank	Centre Umpires Programme Theory Test pass Screened by Centre panel	Regional Umpires Programme Regional Theory Pass Screened by RPP (at least 2) -current Centre Award for Regional Award OR current Regional award for endorsement	Fitness test NZ Theory Pass NZ Umpires Programme Current Regional Award or endorsement Screened by RNZP or NZUP or NNZ Event Panel	NZC, NZA or NZB, IUA NZ Theory Pass	Screened by NZUP or RNZP Fitness test NZ C Award or NZ Award to upgrade to NZB NZ B for Endorsement	-screened by NZUP - Fitness test - NZC or B Awards for upgrade -NZA award for endorsement	Screened by ITP Fitness Test NZA
Coaching	Young Umpires Coaches/ Trainers	Centre Panel	Region Practical Panel	RNZP NZUP if required	RNZP	NZUP, RNZP	NZUP	ITP
Assessors		Centre Panel (at least 2)	RSS Event Panel	RNZ Panel (at least 2) NNZ Event Panel		NZUP NZUP with RNZP NNZ Event panel	NZUP	ITP
Level of Games for assessments				NZUP to agree on games identified by RNZP in regions NZU17 Champs RSS finals, semi finals and other games identified by NZUP		NZUP identify games Regions/Centres NZ AGC NZ Champs	- NZ Champs	Trans Tasman Champs International matches
Endorsement		- every 4 years	Every 4 years	Every 4 years		Every 4 years	Every 4 years	Every 4 years
Other			Not endorsed becomes non current.					

PATHWAYS for PANEL MEMBERS

A major goal for Netball New Zealand is to provide a pathway for Netball Umpire Panels that is seen as fair and transparent. This flow diagram charts the pathway for Practical Assessor development.



International Umpires Award

Procedure and Information

The International Umpires Award is an IFNA Award. International Testing Panel members are responsible for assessing umpires for the award.

Pre-requisites

- Currently umpiring at the highest national level within his/her country/region
- Hold the highest national umpiring award within his/her country
- Pass a multi stage Fitness Test (beep test)
- Have been successfully screened by the ITP

Key Performance Indicators

Details available in IFNA book

Assessment Panels

The International Testing Panel is responsible for assessing umpires for this award.

Endorsements

- An umpire must have the award endorsed every four years by the ITP
- A New Zealand Umpire who chooses not to endorse the IUA Award will become a NZ Award umpire at the time the IUA lapses
- A New Zealand Umpire who fails to gain endorsement of the IUA Award will become a NZ umpire at the level they are assessed to be i.e. NZA, NZB ,NZC or NZ Award

New Zealand A Umpire Award

Procedures and Information

- The NZ Umpires Panel shall coach all NZ A Award Umpires. If an umpire is in a National Squad this will be done in consultation with the squad coach
- The NNZ Event Panel will coach NZA Umpires at National Events.
- Verbal and/or written feedback shall be given
- To be considered for a NZ A Award an Umpire shall be successfully screened by at least two members of the NZ Umpires Panel
- At least two members of the NZ Umpires Panel shall assess the umpire. The umpire shall be given a copy of the NZ A Award & Endorsement Report and a copy will be filed in the NNZ Office (*Appendix A*) within 7 days
- The NZ A Umpire must gain Merit in at least four areas and the remainder achieved or above
- A NZ A Umpire shall be assessed for Endorsement by the end of the fourth year but not within two years of gaining the award
- A NZ A Umpire who chooses not to endorse shall become a NZ Award Umpire
- A NZ A Umpire who fails to successfully endorse shall become a NZ B, NZ C or NZ Award umpire dependent on level assessed at
- Annually umpires shall be provided with the Coaching & Assessment Questionnaire (*Appendix G*) by their Region. This will be forwarded to the Umpire Development Manager

Pre-requisites

- Current Fitness test result (see fitness testing)
- Successfully screened
- Non endorsed IUA, NZ B or NZ B Endorsed, NZC or NZC Endorsed for upgrade to NZ A and a NZ A for the NZ A Endorsement
- A pass of 85% in NZ Theory of the Netball New Zealand Umpires Theory examination

Screening

- Screening most likely to take place at NNZ Event.
- Screening will take place over one or more games
- An umpire will not be advised they have been screened.

Key Performance Indicators for NZ A Umpire

The following key performance indicators are similar to those required by IFNA to award an International Umpires Award. NNZ supports the IFNA award and therefore uses the same skills and techniques for the NZ A Umpire.

Umpiring performance at International level requires a candidate to show umpiring skills of the highest standard on a fast-moving game with a high level of decision-making. Such an umpire will make a significant contribution to the tone of the contest between the two teams concerned.

- 1) **International Match Protocols for Netball Umpires**
These protocols can be found under Training and Education
- 2) **Umpiring Techniques**

Positioning

- Generally positions level with or slightly ahead of play
- Readjusts position quickly and competently when play changes direction or pace. Shows ability to read and understand play and positions accordingly
- Times movement to goal line in relation to play and adjusts on goal line as appropriate
- Moves along sideline to see clearly and to be well placed to give accurate throw in decisions or correct rulings if appealed to by co-umpire
- Keeps off the court except to take a Toss Up or to move back to centre third for the re-start of play

Timing

- Moves in relation to play
- Shows a connection between timing of movement and the movement of the players and the ball
- Readjusts if positioning and therefore timing of play moves backwards instead of forwards
- At no time are players waiting for the umpire to get into position, especially at centre passes

Vision

- Shows the ability to look wide, look often and look early
- Keeps eyes/vision sweeping the appropriate court area: at this level it is expected that umpires would be able to see 6 to 8 players most of the time
- Not follow the flight of the ball at the expense of watching players and their court positioning
- On the goal line, be in a position to see all of the players in the goal circle and those on the goal circle edge

Quickness of reaction

- Show the ability to make choices quickly and easily between whistle decisions and the use of advantage
- Show that reaction time is consistent throughout the court and the game
- Show a clear difference between controlled speedy actions and panic reactions

Signals

- Show consistent and appropriate use of signals to enhance the communication between the umpires and the players
- Signals to be sustained, re-enacting what the umpire is penalising

Setting Penalties

- Skilful, economic, spontaneous and accurate setting of all penalties so that consistency is maintained for the benefit of players
- Setting to be accompanied by clear signals indicating what the penalty is for, to which team it is being awarded and which player, if any, is being stood out of play
- Umpire will need to show that both attacking and defending players have rights and responsibilities in the taking of all penalties

Discipline

- Discipline matters dealt with skilfully, quickly and appropriately

Decisions

Minor (those only infringing a playing rule)

- Accurate application of all the minor infringements including a consistent application of 3 seconds.
- Accurate application of the footwork rule
- Able to penalise over a third, particularly when the decision requires the reading of play coming out of co-umpire's area of control
- The correct application of breaking at centre pass and offside, while showing an experienced use of the advantage rule whenever it is possible

Major (those infringing the rights of an opponent)

- An accurate application of contact and the correct interpretation of the rule.
- A clear difference between contact and causing the contact, and communicating the difference to players.
- Consistent application and interpretation of obstruction, consistency between the court area and the goal circle.

Advantage

- High proficiency in the correct use and application of the advantage rule both through the court and in the goal circle

New Zealand B Umpire Award

Procedures and Information

- The NZ Umpires Panel and/or the Regional NZ Practical Panel shall coach NZ B Umpires in the Regions. They will meet to prepare a plan for this
The NZUP members may request other experienced persons to coach NZ B umpires also
- If an umpire is in a National Squad coaching will only be done in consultation with the squad coach.
- The NNZ Event Panel shall coach NZ B Umpires at events
- Verbal and/or written feedback shall be given
- At least 2 people who are members of a Regional NZ Practical Panel, a NNZ Event Panel or NZUP shall screen the Umpire for the upgrade to the NZ B Award.
- Once successfully screened upgrade or endorsement assessments may be carried out by at least 1 NZUP member and 1 Regional NZ Practical Panel member or 2 NNZ Event Panel (which must include 1 NZUP) or 2 NZUP
- The NZ B upgrade or endorsement assessment may be done in regions on games approved by the region's liaison NZUP, or at NNZ events
- The NZ B Umpire must gain Merit in at least three sections and the remainder must be achieved or above
- Successful umpires shall be given a copy of the NZ B Award & Endorsement Report and another copy will be sent to NNZ Office for filing (*Appendix B*). This must be done within 7 days
- NZ B Umpires are required to successfully endorse by the end of the fourth year but not within 2 years of gaining the NZ B Award or endorsement
- A NZB Award umpire who does not choose to endorse will become a NZ Award umpire.
- A NZB Umpire who is not successful with the endorsement will become a NZC or NZ Award according to the level they are considered to be at when assessed.
- A NZ Award Umpire can be assessed for a NZ B Award if the pre requisites are met
- Annually umpires are encouraged to complete the Coaching & Assessment Questionnaire (*Appendix G*). This will be given to them by the Region and will be forwarded to the NNZ Umpire Development Manager

Pre-requisites

- Current Fitness test
- Successfully screened
- NZ Award or NZ C/Endorsed for upgrade to NZ B Award and a NZ B Award for the NZ B Endorsement Award.
- A pass of 85 % or more NZ Theory of the Netball New Zealand Umpires Theory examination

Screening

- Screening may take place at NNZ Event or on suitable games in the region
- Screening will take place over one or more games
- An umpire will not be advised they have been screened

Key Performance Indicators

The following key performance indicators are similar to those required by IFNA to award an International Umpires Award. NNZ supports the IFNA award and therefore uses similar skills and techniques for the NZ B Umpire's performance at the national level. This requires a candidate to show umpiring skills of a high standard on a skilled and at times fast-moving game with a very good level of decision-making. Such an umpire will make a big contribution to the tone of the contest between the two teams concerned.

- 1) **International Match Protocols for Netball Umpires**
These protocols can be found under Training and Education
- 2) **Umpiring Techniques**

Positioning

- Generally positions level with if not slightly ahead of play
- Readjusts position quickly and competently when play changes direction or pace
- Shows ability to read and understand play and positions accordingly

- Times movement to goal line in relation to play and adjusts as appropriate
- Moves along sideline to see clearly and to be well placed to give accurate throw in decisions or correct rulings if appealed to by co-umpire
- Keeps off the court except to take a Toss Up or to move back to centre third for the re-start of play

Timing

- Moves in relation to play.
- Shows a connection between timing of movement and the movement of the players and the ball
- Readjusts if positioning and therefore timing of play moves backwards instead of forwards. At no time are players waiting for the umpire to get into position, especially at centre passes

Vision

- Shows the ability to look wide, look often and look early
- Keeps eyes/vision sweeping the appropriate court area: at this level it is expected that umpires would be able to see 6 to 8 players most of the time
- Not follow the flight of the ball at the expense of watching players and their court positioning
- On the goal line, be in a position to see all of the players in the goal circle and those on the goal circle edge

Quickness of reaction

- Show the ability to make choices quickly and easily between whistle decisions and the use of advantage
- Show that reaction time is consistent throughout the court and the game
- Show a clear difference between controlled speedy actions and panic reactions

Signals

- Show consistent and appropriate use of signals to enhance the communication between the umpires and the players
- Signals to be sustained re-enactments of what the umpire is penalising

Setting Penalties

- Skilful, economic, spontaneous and accurate setting of all penalties so that consistency is maintained for the benefit of players
- Setting to be accompanied by clear signals indicating what the penalty is for, to which team it is being awarded and which player, if any, is being stood out of play
- Umpire will need to show that both attacking and defending players have rights and responsibilities in the taking of all penalties

Discipline

- Discipline matters dealt with skilfully, quickly and appropriately

Decisions

Minor (those only infringing a playing rule)

- Accurate application of all the minor infringements including a consistent application of 3 seconds.
- Accurate application of the footwork rule
- Able to penalise over a third, particularly when the decision requires the reading of play coming out of co-umpire's area of control
- The correct application of breaking at centre pass and offside, while showing an experienced use of the advantage rule whenever it is possible

Major (those infringing the rights of an opponent)

- An accurate application of contact and the correct interpretation of the rule
- A clear difference between contact and causing the contact, and communicating the difference to players
- Consistent application and interpretation of obstruction, consistency between the court area and the goal circle

Advantage

- High proficiency in the correct use and application of the advantage rule both through the court and in the goal circle

New Zealand C Umpire Award

Procedures and Information

- The Regional NZ Panel shall coach NZ C Umpires and current Regional Umpires who hold a NZ Theory pass.
- Verbal and/or written feedback shall be given
- At least 2 of the Regional NZ Practical panel or NNZ Event Panel or NZUP shall screen the umpire to determine whether the umpire is ready to be assessed for NZ C
- At least two members of the Regional NZ Practical Panel or NNZ Event Panel or NZUP will assess the umpire. It is preferable one of the assessors is different to the two who screened the umpire *(Assessments may also take place at Regional Secondary Schools (RSS- UNISS, LNISS, and SISS) events by event panels containing Regional NZ Panellists. Assessors at RSS events are not required to consult the umpire's region prior to assessing. However they may wish to advise panellists from the umpire's Region if they are present.)*
- Successful umpires will be given a copy of the NZ C Umpires Award Report. *(Appendix C)* one is filed in the Regional office and another is sent to the NNZ Office.
- The NZ C candidate must gain achieved in all areas to gain the NZ C Award.
- Once NNZ receives the report they will send the successful candidate the NZ C badge and certificate, information on pathways, and details of the NZ Umpires Tracksuit.
- NZ C Umpires are required to successfully endorse by the end of the fourth year but not within 2 years of gaining the NZ C Award or endorsement
- A NZ C Award umpire who does not choose to endorse or who fails to be successful will become a NZ Award Umpire
- The Region and NNZ shall update the database
- Annually umpires are encouraged to complete the Coaching & Assessment Questionnaire *(Appendix G)*. This will be given to them by the Region and will be forwarded to the NNZ Umpire Development Manager

Pre-requisites

- Current Fitness test result
- Successfully screened
- Current Regional Practical
- A pass of 85 % or more in the NZ Theory examination.

Screening

- Screening may take place at a NNZ Event or approved games in the Region or Centre. Umpires may also be assessed at Regional Secondary Schools events if a qualified panel is appointed i.e. the panellists conducting the screening are members of any Regional NZ Practical Panel.
- Screening will take place over one or more games
- An umpire will not be advised they have been screened

Key Performance Indicators

The following key performance indicators are those required by Netball New Zealand to award the NZ C Award. The umpiring performance at NZ C level requires a candidate to show umpiring skills of a satisfactory standard with a satisfactory level of decision-making. Such an umpire should contribute to the tone of the contest between the two teams concerned.

1) International Match Protocols for Netball Umpires

These protocols can be found in Training and Education

***NB** In New Zealand most Regions/Centres will not be using electronic equipment to indicate the 30 and 10 seconds and time signal to Umpires. The runner method will be applied. If Regions/Centres do not stop the clock for stoppages then the local application of the rule must be written in the competition rules*

2) Umpiring Techniques

Positioning

- Generally positions level with if not slightly ahead of play
- Readjusts position quickly and competently when play changes direction or pace
- Shows ability to read and understand play and positions accordingly
- Times movement to Goal Line in relation to play and adjusts as appropriate
- Moves along Sideline to see clearly and to be well placed to give accurate throw in decisions or correct rulings if appealed to by co-umpire

- Keeps off the court except to take a Toss Up or to move back to centre third for the re-start of play

Timing

- Moves in relation to play
- Shows a connection between timing of movement and the movement of the players and the ball
- Readjusts if positioning and therefore timing of play moves backwards instead of forwards. At no time are players waiting for the umpire to get into position, especially at Centre Passes

Vision

- Shows the ability to look long & wide, look often and look early
- Keeps eyes/vision sweeping the appropriate court area: at this level it is expected that umpires would be able to see 6 to 8 players most of the time
- Not follow the flight of the ball at the expense of watching players and their court positioning
- On the Goal Line, be in a position to see all of the players in the Goal Circle and those on the Goal Circle edge

Quickness of reaction

- Show the ability to make choices quickly and easily between whistle decisions and the use of advantage
- Show that reaction time is consistent throughout the court and the game
- Show a clear difference between controlled speedy actions and panic reactions

Signals

- Show consistent and appropriate use of signals to enhance the communication between the umpires and the players
- Signals to be sustained re-enactments of what the umpire is penalising

Setting Penalties

- Skilful, economic, spontaneous and accurate setting of all penalties so that consistency is maintained for the benefit of players
- Setting to be accompanied by clear signals indicating what the penalty is for, to which team it is being awarded and which player, if any, is being stood out of play
- Umpire will need to show that both attacking and defending players have rights and responsibilities in the taking of all penalties

Discipline

- Deal with discipline issues early and correctly while maintaining control and contributing to the over all positive tone of the game

Stoppage

- Shows good understanding of the rules as they apply at a stoppage for injury/illness, blood policy and emergencies
- Deal with any coaching and the restart of the game efficiently and correctly

Decisions

Minor (those only infringing a playing rule)

- Accurate application of all the minor infringements including a consistent application of 3 seconds.
- Accurate application of the footwork rule
- Able to penalise over a third, particularly when the decision requires the reading of play coming out of co-umpire's area of control
- The correct application of breaking at Centre Pass and offside, while showing an experienced use of the advantage rule whenever it is possible

Major (those infringing the rights of an opponent)

- An accurate application of contact and the correct interpretation of interference
- A clear difference between contact and causing the contact, and communicating the difference to players.
- Consistent application and interpretation of obstruction, particularly 0.9 metre distance consistency between the court area and the Goal Circle.

Advantage

- Proficiency in correct use and application of the advantage rule through the court and around the Goal Circle

New Zealand Award Umpire

Procedures and Information

- The Regional NZ Practical Panel shall coach umpires with the NZ Award. NZUP may also coach NZ Award umpires
- Verbal and/or written feedback shall be given
- A NZ Award Umpire may be assessed for the NZ A/B/C Award providing all pre requisites are met
- Procedures and information for NZ A/B/C Awards apply to the NZ Award Umpire wishing to be upgraded
- The Region shall update the database, advise Netball NZ and forward a copy of the Assessment report form to NNZ
- NZ Award Umpires will be encouraged by the region to complete the fitness testing each year

Pre-requisites

- At least NZ C Umpire
- An umpire with NZC/NZ B /NZ A /IUA who has chosen not to endorse and is still umpiring
- NZ A, B or C umpire who is unsuccessful with endorsement

Retired, Inactive Umpires

To assist Netball New Zealand maintain an accurate database of active umpires any umpire who does not umpire for one year must advise Netball New Zealand of their status. This will be done by the region who will be asked by NNZ to confirm all umpires on NNZ database are still active. The names of the umpires will be forwarded to the regions for confirmation in October each year. Umpires who have retired will be removed from the list. Umpires who are pregnant or have serious injury or illness may stay on the list but are subject to normal endorsement requirements i.e. have 2-4 years to endorse.

Regional Umpire Award

Procedures and Information

- The Regional Practical Panel will coach all umpires who have passed their Regional Theory. The Regional NZ Practical Panel can assist with coaching and assessment at Regional level if required
- Verbal and/or written feedback shall be given
- At least 2 members of the Regional Practical Panel or NNZ event panel or Regional Secondary Schools Panel shall screen umpires for their readiness to sit the Regional Qualifying Test
- Once successfully screened over 1 or more games the umpire may sit the Regional Qualifying Award
- At least 2 members of the Regional Practical Panel or NNZ event panel shall assess an umpire for the Regional Award. *(Assessments may also take place at Regional Secondary Schools (RSS- UNISS, LNISS, SISS) events by event panels containing Regional Panellists. Assessors at RSS events are not required to consult the umpire's region prior to assessing)*
- The umpire will be given a copy of the Regional Qualifying/Endorsement Report and another copy is filed in the Region Office *(Appendix D)*
- Once an umpire gains their Regional Award they will undertake an endorsement assessment every 4 years to remain current
- The umpire who is successfully endorsed will be given a copy of the Regional Endorsement and another copy is filed in the Region *(Appendix D)*
- A Regional umpire who fails to remain current becomes non current
- A noncurrent Regional Umpire can become current again by umpiring at the level required
- The Regional Practical Panel will recommend umpires to be viewed by the NZ Practical Panel
- A Regional Umpire should be encouraged to do the fitness testing
- Umpires shall be provided with the Coaching & Assessment Questionnaire Annually by the region. Copies of these will be sent to the Umpire Development Manager *(Appendix G)*

Pre-requisites

- Current Centre Umpires Award for Regional Qualifying
- Current Regional Award for Endorsement
- A pass of 85 % or more in NNZ Regional Theory examination

Screening

- Screening may take place at a NNZ Event or approved games in the Region or Centre. Umpires may also be assessed at Regional Secondary Schools events if a qualified panel is appointed i.e. the panellists conducting the screening are members of any Regional Practical Panel
- Screening will take place over one or more games
- An umpire will not be advised they have been screened

Key Performance Indicators

A pass in the practical test demonstrates a competent level of success in the Key Performance Indicators for the Regional Award. Umpires' at this level of award must have the ability to demonstrate competent control of the game and basic decision-making. As well umpiring protocols must be used appropriately.

1) International Match Protocols for Netball Umpires

These protocols can be found under Training and Education

N.B. In New Zealand games may still use a runner Timekeeper calling for timing purposes therefore the umpire on the "bench side" will still have the Timekeeper notify them when it is 30 seconds, 10 seconds and Time.

If games do not allow stoppage time to be added to the quarter/half then each Region/Centre will have the rule application written into their competition rules.

2) Umpiring Techniques

Position

- Level with if not just a little ahead of play and follow around behind the goal circle with an attempt to get into the best possible position
- Show knowledge of re-positioning to ensure a clear view of play
- No umpire shall be on court except to take a tossup

Timing

- Move in relation to play
- Show a connection between their timing of movement and the movement of the players and the ball
- Readjust if players and the ball readjusts

Vision

- Show some ability to look wide, look often and look early
- Not always follow the flight of the ball at the expense of watching the players and their court positioning

Control, Communication, Hand signals

An umpire being tested at this level must be able to demonstrate that they are in control of the game before they can umpire effectively.

- Clear, crisp whistle blowing
- Firm confident manner
- Audible calls
- Use of appropriate hand signals to aid communication
- Use of correct terminology
- Quick reactions
- Set penalties clearly, quickly and correctly
- Indicate all Centre Passes
- Deal with discipline and stoppage procedures correctly

Decisions

Consistency is important at any level. An umpire worthy of a NZ Regional Award should be able to:

- Recognise stepping
- Display a range of knowledge of the other minor rules such as 'Held Ball', 'Offside', *Over a Third*, etc
- Conduct a Toss Up in accordance with the Rule Book
- Penalise all obvious Obstruction
- Penalise all obvious Contact – including the clear examples of those listed in the Rule Book
- Demonstrate an awareness of the Advantage Rule and its application and apply this on most occasions.
- Signal each Centre Pass. If any doubt umpire to check with the co umpire and then the scorer
- Appropriate instructions must be given to the scorer and timekeeper
- Show a sound awareness that the Throw in is being taken in the correct place and all possible infringements are penalised
- Demonstrate good knowledge of general rules together with reasonable consistency of their interpretation

Summary

Umpires for the New Zealand Regional Award should possess control, reasonably umpire the minor infringements, penalise all obvious contacts and obstruction, and display knowledge of the Advantage Rule.

Centre Umpire Award

Procedures and Information

- The Centre Umpires Panel will coach all umpires who have passed their Centre Test Bank Theory. Regional Panels may assist Centre Umpires Panels with coaching and assessments
- Verbal and written feedback shall be given at time of assessment
- At least 2 members of the Centre Umpires Panel will screen umpires for their readiness to sit the Centre Qualifying Test
- At least 2 of the Centre Panel will assess the umpire
- The umpire will be given a copy of the Qualifying Report and another copy is filed in the Centre Office (*Appendix E*)
- An umpire who passes the Qualifying will be known as a Centre Qualified Umpire
- Centres Update data base
- Centre Umpire Panels can recommend talented umpires to be viewed by their Regional Practical Panel
- Centre Award umpires should be encouraged to complete the fitness test (*Appendix S*)
- Annually umpires shall be provided with the Coaching & Assessment Questionnaire (*Appendix G*) by the Centre. The Centre shall forward all completed to NNZ Umpire Development Manager

Pre-requisites

- For Qualifying Umpires it is suggested the candidate attends a Centre Practical Umpire Course
- Gain a pass mark (23/25) in the NNZ Theory Test Bank for Centre Umpires

Screening

- Screening will take place over one or more games
- An umpire will not be advised they have been screened

Key Performance Indicators for Centre Umpires

A pass in the practical test demonstrates a competent level of success in the Key Performance Indicators for the Centre Award. Umpires at this level of award must have the ability to demonstrate good control of the game and basic decision-making.

1) International Match Protocols for Netball Umpires

These protocols can be found under Training and Education.

NB: In New Zealand most Regions/Centres will not be using electronic equipment to indicate the 30 and 10 seconds and time signal to Umpires. The runner method will be applied. If Regions/Centres do not stop the clock for stoppages then the local application of the rule must be written in the competition rules.

2) Umpiring Techniques

Position

- Level with if not just ahead of play
- Moves around behind goal circle when ball is in the goal circle
- Is positioned on the same side of the Goal Line as the ball when it is in the Goal Circle
- Show some knowledge of the need to re-position to get a clear view of play
- No umpire shall be on court except to take a toss up

Timing

- Move in relation to the movement of the ball
- Show some ability to readjust if players and the ball readjust

Vision

- Begin to show some ability to look wide, look often and look early

Control Communication Hand signals

An umpire being tested at this level must be able to demonstrate that they are in control of the game before they can umpire effectively. Therefore, the basic umpiring techniques as follows need to be displayed.

- Clear, crisp whistle blowing
- Firm confident manner
- Audible calls with correct terminology
- Introduction of hand signals
- Set penalties clearly, quickly and correctly
- Indicate all Centre Passes
- Beginning to show good understanding of discipline and stoppage procedures

Decisions

Consistency is important at any level. An umpire worthy of a NNZ Centre Award should be able to:

- Recognise some stepping
- Display a range of knowledge of the other minor rules such as 'Held Ball', 'Offside', 'Over a Third' etc
- Conduct a Toss Up in accordance with the Rule Book
- Penalise obvious Obstruction
- Penalise obvious Contact – including the clear examples of those listed in the Rule Book
- Show a sound awareness that the Throw in is being taken in the correct place and possible infringements are penalized
- If using the Advantage Rule, particularly through court, show that they are using it correctly

Summary

Umpires for the Netball New Zealand Centre Award should be able to: use simple protocols, use hand signals and voice to communicate with the players, demonstrate control, use discipline wisely, show understanding of stoppage procedures, show some understanding of the techniques of position, vision and timing, reasonably umpire the minor infringements and penalise obvious Contact and Obstruction as well as apply obvious advantage.

Recognition of Prior Learning (RPL)

Netball New Zealand recognises umpires from other countries who take up residence in NZ may have relevant umpiring qualifications from those countries.

Every effort will be made to acknowledge prior learning and enter the umpire at an appropriate level on the Netball New Zealand Accreditation pathway.

The Application Form for Recognition of Prior Learning (*Appendix W*) shall be completed.

Umpire Panels

NZ UMPIRE PANEL

The focus for the **NZ Umpire Panel (NZUP)** is to provide regional support and to take an active role in overseeing and leading the development of umpiring in the Region/s.

The NZUP provides a critical link between NNZ and the Regions/Centres.

Term of Appointment

All positions are for an initial term of one year with the option of up to 3 year terms to follow on completion of satisfactory appraisal. Panel members may reapply for positions when advertised at completion of their term.

Cadets may be appointed for a term of one or more years. At the completion of their cadetship following a satisfactory appraisal they may be appointed for up to a 3 year term.

Vacancies will be advertised by October 1 and applications close on October 15 (*Appendix H*)

Qualifications required

NZUP members must have at least one of the following qualifications:

- IUA, NZA/A Endorsed or NZB/B Endorsed Umpire
- International Umpiring experience within last four years
- Umpired at NZ Championships within last 4 years
- Assessed at NZ level within last two years
- Assisted with feedback at ANZ Champs within last 2 years

Skills Required:

It would be expected members of the NZ Umpires panel would be able to:

- Impart up to date knowledge
- Analyse an umpire's performance and pinpoint strengths and weaknesses
- Communicate in a constructive and honest manner
- Make decisions which are detached and impartial
- Foster and encourage individuality in umpiring performance which contributes to positive enjoyment of the game by the player and umpire
- Be an effective team member responsible for setting processes and carrying them out in a timely manner
- Execute duties in a professional manner and maintain confidentiality as required

Key Functions

A summary of the role of the NZUP member is as follows:

- Regional support especially to allocated Region/s
- Assist Regions to develop and implement umpire development plans
- Panel at NNZ events e.g. LFNC/NZSS Champs/NZAGC/ etc
- Upgrade and endorsement of umpires during the year and at events
- Preparing individual plans and assist with coaching of all A and B Award umpires who are not in National Squads
- Assist with selection of National Squads
- Recommend umpires to attend events
- Assist the National Umpire Squad Coaches with supporting the development of Umpire Squad members within Regions as practicable
- Train, mentor and monitor regional panels
- Attend professional development opportunities as required
- Assist with workshop material development and presentation
- Other tasks as required by NNZ

NB: Some of these may vary for cadet appointees.

NZ THEORY PANEL

The focus for the NZ Theory Panel (NZTP) is to provide quality examinations which test the theoretical knowledge of umpires.

The role is divided into three sections:

- Moderators
- Examiners
- Markers

MODERATORS:

NNZ will appoint one moderator for NZ Theory and one moderator for Regional Theory.

Term of Appointment

The moderator positions will be for an initial term of one year with the option of up to three year terms to follow on completion of satisfactory appraisal. Moderators may re-apply for the positions when advertised at completion of terms.

Vacancies will be advertised by October 1 and applications close on October 15 (*Appendix I*)

Qualifications preferred

- Experienced in marking examination papers
- Experienced in tutoring theory
- Experienced in setting up marking schedules
- Experienced in working with a team of people
- High level of netball rules knowledge and application

Skills Required

It would be expected the Theory Moderators would have the ability to

- Work under pressure and meet deadlines
- Make appropriate decisions
- Be an effective team leader
- Be an effective team member
- Contribute to the theory evaluation process
- Maintain confidentiality in all aspects of examination information

Key Functions

- Review and moderate all new exams written by the examiners.
- Liaise with Umpire Development Manager on processes and procedures
- Co-ordinate and assist with marking of the theory papers
- Provide the Moderator's report and statistical information
- Lead the identification of areas of need within umpire theory
- Assist the examiners and markers with developing quality processes and practices
- Provide analysis and assessment of the results
- Assist with development of Theory Resources

EXAMINERS

NNZ will appoint two examiners who will set the Regional and NZ papers. They will also mark NZ papers

Term of appointment

Examiners positions will be for an initial one year term with the option of up to a three year term to follow on completion of a satisfactory appraisal. They may reapply for positions when advertised at completion of that term.

Vacancies will be advertised by October 1 and applications close on October 15 (*Appendix I*)

Qualifications Preferred

- High level of rules knowledge and application
- Experience in tutoring and marking papers
- Experience in setting papers

Skills Require

It would be expected the NZ Theory Examiners would

- Have excellent command of written English
- Have ability to work under pressure and meet deadlines
- Be an effective team member
- Maintain confidentiality in all aspects of examination information

Key Functions

- Write annual umpire exams (Centre Theory Test Bank, Regional Theory & NZ Theory)
- Mark NZ Theory exams
- Provide suggested answers for all papers
- Assist Moderator with the report and analysis for NZ Theory papers as required
- Ensure there is a reasonable and regular coverage of all aspects of the game through the theory exam
- Ensure rule changes are incorporated into the exams as and when required
- Liaise with Umpire Development Manager and other Examiner on processes and procedures
- Assist with development of Theory resources

MARKERS

NNZ will appoint up to three markers for the Regional Theory exam.

Term of appointment

Markers will be appointed for an initial one year term with right to further two year term on completion of satisfactory appraisal. Markers may re-apply for positions when advertised at completion of the term.

Vacancies will be advertised by October 1 and applications close on October 15 (*Appendix I*)

Qualifications preferred

- High level of netball rules knowledge and application
- Experience in tutoring netball rules
- Experience in marking papers

Skills required

It would be expected that Markers for Regional Theory have the ability to

- Work under pressure and meet deadlines
- Maintain confidentiality in all aspects of examination information
- Be an effective team member

Key functions

- Mark all Regional Theory exams (twice per year) at venues, date and time arranged by NNZ
- Liaise with Regional Moderator on all matters relating to the Regional paper
- Assist with development of Theory Resources

REGIONAL UMPIRE PANELS

Each Region, in consultation with NNZ, shall appoint a Regional Umpires Panel. This panel will consist of up to six NZ Practical and six Regional Practical members.

Term of appointment

All positions are for an initial term of one year with the option of up to a three year to follow on completion of satisfactory appraisal.

Panel members may re-apply for positions when advertised at completion of their term.

Further personnel, known as cadets, may be appointed.

Cadets will observe at least 3 assessments with the Panel Convenor before becoming part of an assessment panel

Applications close with the Regions on October 31. *(Appendix J)*

The Regions will notify Netball New Zealand of their recommendations for appointments by November 30 *(Appendix J)*

REGIONAL NZ PRACTICAL PANEL

Qualifications required

A Regional NZ Practical Panel member must have at least one of the following:

- Current IUA or NZ A or B umpire
- Current National Squad Coach
- Umpired at NZ Championships within last 4 years
- Umpired at NZAGC or NZSS within last 2 years
- Assessed at NZ level within last 4 years
- Regional Practical panel within last 2 years

Skills required

It is expected that members of the Regional NZ Practical Panel would

- Impart up to date umpiring knowledge
- Analyse an umpire's performance and pinpoint strengths and areas to develop
- Empower umpires by effective feedback and coaching methods
- Communicate in an honest and constructive manner
- Make decisions which are detached and impartial
- Foster and encourage individuality in umpiring performance which contributes to positive enjoyment of the game by the player and the umpire
- Be an effective team member responsible for setting processes and carrying them out in a timely manner
- Exercise duties in a professional manner and maintain confidentiality as required

Key Functions

- Recommend umpires from the region to attend NZ AGC
- Recommend talented umpires to be viewed by NZUP
- Assist with training of Regional Practical Panel and Centre Panels
- Screen NZC Umpires and NZ Award Umpires for the NZ B Umpires Award
- With NZUP assess NZ B Award Umpires and NZ B Endorsed Umpires
- Coach pre NZC Award and NZ Award umpires in region
- Screen umpires for the NZC Award
- Assess umpires for the NZC Award
- Assist the Regional Practical Panel if required
- Coach umpires as required
- Contribute to NZAGC and NZSS Championship panels
- Attend NNZ Panel workshops

- Where possible contribute to Regional Secondary Schools event coaching panels
- Work with NZUP when invited
- *Train* cadet panel members

NB: Applications for NNZ Event Panels close 31 March. (*Appendix R*)

REGIONAL PRACTICAL PANEL

Qualifications required

A member must hold at least one of the following:

- NZ Umpire in last 4 years
- Regional Umpire in last 2 years
- Member of a Regional Panel in the last 4 years
- Current Centre Panel member

Skills Required

It is expected that members of the Regional Practical Panel could

- Impart up to date umpiring knowledge
- Empower umpires be effective feedback and coaching methods
- Analyse an umpire's performance and pinpoint strengths and areas to develop
- Communicate in a constructive and honest manner
- Make decisions which are detached and impartial
- Foster and encourage individuality in umpiring performance which contributes to positive enjoyment of the game by the player and umpire
- Be an effective team member, responsible for setting processes and carrying them out in a timely manner
- Exercise duties in a professional manner and maintain confidentiality as required

Key Functions

- Contribute to the umpire coaching programme in the region
- Coach pre NZ Regional Award and Endorsement umpires
- Screen umpires for the NZ Regional Award
- Assess umpires for the NZ Regional Award
- Recommend umpires to be viewed by the Regional NZ Practical Panel
- Assist Centre Umpire Panels
- Where possible contribute to Regional Secondary Schools Coaching Panels
- Encourage umpires to move along the pathway

CENTRE UMPIRE PANELS

Where possible each Centre shall appoint a Centre Umpires Panel to coach and assess all Centre Umpires. Neighbouring Centres may group together to maximise use of personnel. However this should be a formal arrangement agreed to by the Centres. The Centre Umpires Panel should consist of at least 4 members. Further personnel, known as cadets, may be co-opted to assist with coaching. These people will not assess.

Term of appointment

All positions are for an initial term of one year with the option of up to a three year to follow on completion of satisfactory appraisal.

Panel members may re-apply for positions when advertised at completion of their term.

Further personnel, known as cadets, may be appointed.

Cadets will observe at least 3 assessments with the Panel Convenor before becoming part of an assessment panel.

Applications close with the Centres on October 31 (*Appendix L*)

The Centres will notify the Region of their recommendations for appointments by November 30. (*Appendix N*)

Qualifications required

A Centre Umpires Panel member must have at least one of the following

- NZ Regional or Centre Award within last 4 years
- Assessed at Regional or Centre level within last 4 years
- Coached umpires within last 4 years

Skills required

It is expected members of Centre Umpires Panels would have the ability to

- Communicate in a constructive and helpful manner
- Effectively impart knowledge by tutoring or coaching clinics
- Empower umpires by effective feedback and coaching techniques
- Analyse an umpire's performance and pinpoint strengths and areas to develop
- Make decisions which are detached and impartial
- Foster and encourage individuality by umpiring performance which contributes to positive enjoyment of the game by the player and umpire
- Be an effective team member, responsible for setting standards of umpiring, assessing standards of individual umpires, coaching umpires and interpreting theory and application of rules
- Exercise duties in a professional manner and maintain confidentiality as required

Key Functions

- Train young umpires
- Train young umpire coaches
- Coach pre Centre and Centre Umpires
- Coach umpires for the Centre Award
- Screen umpires for the Centre Award
- Assess umpires for the Centre Award and Endorsement of Centre Award
- Recommend umpires for future coaching to the Regional Practical Panel
- Attend training workshops as required
- Encourage umpires to move along the pathway

Netball New Zealand Theory Examinations

Procedures and Information

Dates

- The Netball New Zealand Theory Examinations will be held twice annually
- The dates will be advised to regions by November 30 each year
- Closing dates for all examinations will be advised to Netball Regions annually

Applications & Fees

- Applications and fees must be received at the NNZ office by 4.00pm on the closing date
- Application forms are available through Netball Regions, Centres and also on the NNZ website
- Late applications will not be accepted
- Incomplete applications will be returned to the Region
- Once a candidate has made application to sit the exam, cancellations will be treated as follows:
 - If written cancellation is received no less than 10 days prior to the exam, a refund will be given less 10%
 - If written cancellation is received between 10 and 5 days prior to the exam, a refund will be given less 50%
 - If notice is received less than 5 days prior to the examination, **NO** refund will be given

NB: NNZ will accept transfers to the next examination in the same year, if requested by the candidate/Region and received no more than 7 days from the date of the exam they want to be transferred from.

- A candidate may attempt the NZ paper twice in one year
- The use of a Reader-Writer or other special conditions may be authorised by NNZ for a candidate under specified conditions. The appropriate application form must be completed (*Appendix O*). See page 32 for more detail on use of Reader-Writer.

Preparation

- Sample questions are provided for candidates and are also available on the NNZ website. (*Appendix P*)
- The latest NZ Theory paper is available on the NNZ website

Pre-requisites

NZ Theory

Regional Practical Award or Endorsement

Regional

Centre Practical Award or Endorsement.

Netball New Zealand Responsibilities

- Advise regions of closing dates annually
- Forward examination papers and instructions directly to supervisors not less than seven days before the examination
- Return marked papers direct to the candidates
- After each exam provide each Region and Centre with a copy of the exam script, suggested answers, moderators report and statistics and certificates for all successful candidates.
- Place a copy of the exam script, suggested answers, moderators report and statistics on the Netball New Zealand website

Region Responsibilities

- Liaise with Centres to ensure the candidates have a copy of the updated application form. *(Appendix O)*
- Organise a venue and appoint a supervisor for each examination venue in the Region
- Ensure candidates who are in another Region on the day of the exam are registered to sit in a venue in that Region
- Return Supervisors notification form to NNZ at least one month before the examination date. *(Appendix N)*
- Check all information on the Application Form is verified and signed
- Forward all applications and one covering cheque for examination fees to NNZ by closing date.
- Individual applications will be received by NNZ provided they are verified by the Region/Centre Official and the fee is attached
- Liaise with Supervisor(s) regarding all examination venue details. Forward copy of paper to each Centre
- Ensure certificates are given to successful Candidates. Ensure all results are entered on the Regions database
- Identify needs of each Centre relating to theory examinations

Centre Responsibilities

- Ensure application forms are received by candidates. *(Appendix O)*. Liaise with the Region in regard to venue and supervisor details
- Ensure all information on the Application Form is verified and signed
- Forward all applications to the Region for sending to NNZ by closing date
- Individual applications will be received by NNZ provided they are verified by the Region/Centre Official and the fee is attached

Supervisors Responsibilities

- Liaise with the Region/Centre regarding examination venue
- Ensure any reader/writer candidate has a suitable venue (separate from the main exam venue)
- Notify NNZ if examination papers are not received by at least five days before the examination
- Ensure examination papers are stored in a secure place and are only opened in the presence of the candidates immediately prior to the commencement of the examination
- Supervise examination at nominated venue on the date scheduled in accordance with examination instructions with examination papers
- Ensure Candidates sign candidates list that comes with the papers. A candidate who is not on the form may not replace another nor can their name be added
- Return completed papers and candidate list to NNZ as directed in the provided courier bag within 24 hours of the examination
- The exam must be sat on the day and date outlined by NNZ
- The exam must start no earlier than 6.30pm and no later than 7.30pm
- If there are exceptional circumstances an application must be made in writing to NNZ no later than 7 days before the exam setting out the reasons for such a request
- No candidate shall be admitted to enter the exam under the influence of liquor/drugs etc No smoking is permitted in the examination room
- No cell phones shall be taken into the examination room
- No candidate may enter the exam after 30 minutes of the start time or leave in the first 60 minutes of the exam
- Any candidate wishing to sit the exam overseas must apply in writing to NNZ at least 2 month prior to the examination date

CENTRE THEORY TEST BANKS

- Netball New Zealand will provide Theory Test Banks to be used at Centre level.
- All umpires are required to pass one of the Test Banks before attempting the Centre Award
- The Test Banks will be conducted in the Centres when and where they decide.
- Centre personnel will be responsible for marking the Test Banks
- Centres shall keep a record of candidates and results.
- The Test Banks, Questions and Answers, will be on the NNZ website

NZ Theory Examination Information

Use of a Reader and or Writer or other Special Conditions

The use of a reader and or writer or other special conditions may be authorised for a candidate for NZ Theory Examinations (NZ or Regional) under specified conditions.

NB Candidates are required to attach their requests to have a reader and or writer or other special conditions to their NNZ Theory Examination Application Form (*Appendix O*)

Previous approval granted for use of a Reader and/or Writer

Any person who has been approved to use a Reader and or Writer or other special conditions in a national external examination administered by the NZ Qualifications Authority or similar statutory examination authority or a registered university or Polytechnic, will be permitted to use a Reader and/or Writer or to have similar conditions in a NNZ Theory Examination.

Formal evidence of this approval must be provided before permission will be given (original letter of approval or certified copy required). This report, letter of approval or certified copy must be attached to the NZ Theory Examination Application Form.

Assessment by a Teacher/Tutor of Learning Needs/Literacy

A candidate who wishes to apply for use of a Reader and or writer or other special conditions and who does not have approval as outlined above may submit a report from a Teacher of Learning Needs to support his/her application for such consideration. The report must be attached to the Theory Examination Application Form.

The Umpire Development Manager may contact the writer of the report to discuss any conditions related to the report.

Unsuccessful previous attempts

A candidate who has unsuccessfully sat a NZ Theory Examination one or more times may apply for use of a Reader and/or writer or for other special conditions. The candidate must make a written application on the NZ Theory Examination Application Form. The candidate shall attach one complete unsuccessful script. Please take a copy of the original paper before sending it with the application.

Approval and Conditions for the Examination

- The candidate shall be advised of the outcome of his/her application not less than twenty one days before the date of the Examination
- The Umpire Development Manager may need to make contact with personnel to assist in the decision making
- If the application is approved the Supervisor must be advised by the same date and requested to make the necessary arrangements
- The Umpire Development Manager must be advised of the Reader and/or Writer not less than fourteen days before the Examination
- A candidate using a Reader and/or Writer is required to sit the examination at the same place as other candidates but must be located separately so other candidates are not disturbed
- A third person shall be present to act as supervisor of the examination
- The Reader shall read the question as written and may not convey any hints or messages
- Similarly the writer shall record the answer exactly as provided by the candidate
- Any cost associated with this application will be resolved between the candidate and the supervisor of the examination
- Special conditions may ask for additional time and/or a big print paper only

Additional Time

The Umpire Development Manager shall determine the amount of any additional time permitted. The Guidelines are:

Length of examination: 1 hour	Extra Time: 10 minutes
Length of examination: 1 hour 30 minutes	Extra Time: 20 minutes

Training & Education

UMPIRE COACHING DEVELOPMENT

Procedures and Information

Netball New Zealand

- encourages coaching of all umpires to assist in moving quickly and knowledgably through the Awards
- encourages all umpires to see the value in receiving coaching before being assessed
- provides coaching at the high performance level with the Umpire Squad structure and the Talent Identification process
- will run annual workshops for Regional Panels to assist them with their planning and programmes. This may be regionally or nationally

Regions

- are required as part of the Coaching and Assessment Framework to provide coaching for umpires at the NZ and Regional level. The Regional Umpires Panels will provide this coaching, although other suitable people may also be appointed as Umpire Coaches within the regions.
- are encouraged to select squads for their umpires within the Region e.g. Under 19 Squad, TID umpires, for coaching and further development

Centres

- are required as part of the Coaching and Assessment Framework to provide coaching for umpires at Centre Level. The Centre Umpires Panel will provide this coaching. Other suitable people may also be appointed umpire coaches.
- are encouraged to select squads of umpires within their Centre e.g. TID Centre Umpire Squad & a Young Umpires Squad

Coaches and Panels

- must identify the learning styles of the participants to enhance their learning
 - Written
 - Oral
 - Visual
 - Practical/action
- are encouraged to use the modules in the NNZ Level 1,2 and 3 Coaching Programmes
- There are also approved NZQA Unit Standard programmes which can be incorporated into other programmes to enhance the achievements of young umpires
- Schools are a great place to find enthusiastic umpires of the future and many students would welcome practical coaching to assist them to begin on this career. The Young Umpires programme will assist Centres and Schools to provide a comprehensive coaching programme for these umpires.

Netball New Zealand Responsibilities

Netball New Zealand, through NZUP will train Regional Panels. This may be in the form of

- Panel workshops in regions
- Inclusion on event panels (*Appendix R*)
- Game and feedback observation
- Workshops during events

Resources

- New Zealand Level 1, 2, and 3 Coaching Programmes are available from Netball Regions.

They are excellent resources for coaches preparing umpires.
These programmes are to be administered by Regions and Centres.

- Level 1 The Centre Umpire Coaching Programme (will be updated 2011)
- Level 2 The Regional Umpire Coaching Programme (will be updated 2011)
- Level 3 The New Zealand Umpire Coach Programme (will be updated 2011)
- The Young Umpires programme can be purchased from Sports Distributors Ltd
- From time to time NNZ will provide other resources such as Umpire Skills on DVD

Netball New Zealand Umpire Coaching Guide

The Umpire Coaching Guide table will assist Umpire Panels to identify skills required for each level.

Umpire Coaching Development Guide

TRAIN TO LEARN → TRAIN TO UMPIRE → TRAIN FOR INTER COMPETITION					
Umpire Principle	Introductory	Centre	Regional	New Zealand	International
FOUNDATION SKILLS					
Movement Skills	Running	→			
	Stopping	→			
	Sideslip	→			
Ball Skills		Change of direction			→
		Body control			→
	Toss up technique	→	Change of pace		→
Rule Knowledge		Play from toss up			→
	Footwork rules Position rules-offside Over 1/3, throw in Centre pass	Pre game rules Interference rules			→
	Ball rules – held, reply, short pass, interference rules, contact & obstruction				→
Protocols	Before a game				→
	During a stoppage				→
			Whistle protocols		→
	During play				→
	During an interval				→
	At the end of the match				→
	Working with co umpire				→
				Reserve Umpires	→

TRAIN TO LEARN

TRAIN TO UMPIRE

TRAIN FOR INTER COMPETITION

Umpire Principle	Introductory	Centre	Regional	New Zealand	International
CONTROL					
Rule Interpretation			Understanding differing playing styles		→
Rule Application	Developing feel for the game	Understanding advantage rule	Accuracy of rule interpretation		→
Consistency Accuracy	Fairness, neutrality	Understanding players "actions and desired outcomes" Understanding player team tactics Understanding player skill level Understanding contact, contest, obstructions with or without the ball & advantage and apply consistently Applying rules consistently & accurately no matter if defensive or attacking player Understanding impact rules can have on flow of game Reading feel of game timing	{ { { {		→
Communication	Facilitate the game <ul style="list-style-type: none"> • Projection of voice • Tone of voice • Hand signal recreate the infringement • Eye contact • Assisting players to play within the rules • Approachable, open, can listen, can interact • Concentration "In the moment" 	{ {	Withstanding pressure		→

→
→

Umpire Principle	Introductory	Centre	Regional	New Zealand	International
DECISION MAKING					
Timing	Timing of movement				→
	Clear & decisive calls				→
Vision	Scanning				→
	Knowing what you need to see				→
Positioning	When to move	Seeing body part of all players early Adapting to physical restrictions			→
	Where to move				
Reading Options		Control of position Angles of vision Anticipating play Anticipating turnover on play Reading game styles Reading speed play Reading cues Adapting to suit conditions			→
Self Analysis	Use of mentor	Use of umpire diary			→
		Peer Coaching			
		Use of video			→
		Self analysis			

International Federation of Netball Associations Protocols for Umpires (Revised August 2010)

1. Umpires

- 1.1 Umpires are Match Officials and it is inappropriate that they wear team tracksuits or march with a team.
- 1.2 An Umpire's clothing, including any colour trim, shall be distinct from the playing uniforms of the competing teams and preferably white or cream in colour (Rule 3.1.5).
- 1.3 IUA Umpires are entitled to wear the IFNA Umpire's badge and tracksuit.

2. Before the Match

The Umpires shall:

- 2.1 Inspect the Court, its surrounds and the match equipment to ensure that:
 - (i) the playing surface and its surrounds are safe with correct run-off areas (Rule 1.1);
 - (ii) the Goalposts, nets, padding and ball meet the required specifications (Rules 1.2 and 1.3);
 - (iii) the Umpire Alert Units are functioning.
- 2.2 Ensure that the Official Bench and both Team Benches comply with the Rules and any requirements specified by IFNA (Rules 3, 3.2 and 3.3).
- 2.3 Off the Court, inspect the players to ensure that playing uniform, jewellery, adornments and fingernails meet the requirements (Rule 1.4).
- 2.4 Encourage the Captains to toss for goal end or first Centre Pass, preferably before commencing warm-up.
- 2.5 Off the Court and after the Captains have tossed, toss for side of Court (as an alternative to the winner taking 'the northern end', prior to taking the toss it can be agreed the winner will take the Official Bench side).
- 2.6 Check that the Timekeeper is aware to notify 30 seconds and 10 seconds where required and to notify 10 seconds where it is the only warning required (Rule 3.3.1(i) (d)).
- 2.7 Check with event officials regarding the length of the half-time interval and whether the match may end in a draw or must be played to a winner (refer Rule 2.5 for Extra Time procedures).

3. Start of Play

At the beginning of each quarter:

- 3.1 The Umpire crossing the Court to the other Side Line carries the ball and hands it to the Centre taking the Centre Pass (if the player is on the Court) or places it on the ground in the Centre Circle. The Umpire then moves to the designated Side Line.
- 3.2 On the indication of 'time':
 - (i) the Umpire commencing play makes eye contact with the Timekeeper and blows the whistle while simultaneously raising one arm straight into the air;
 - (ii) the Timekeeper pushes the clock to start when the whistle sounds.

4. Stoppages

- 4.1 The match may be stopped for:
 - (i) injury/illness after a call for 'time' by an 'on Court' player of the team concerned - the controlling Umpire verifies the reason for the request before deciding whether to stop play or not (may need to ask 'why?' - Rule 7.1); or
 - (ii) incidents relating to blood policy or emergencies (Rules 7.2 and 7.3).
- 4.2 For all stoppages, the controlling Umpire (the Umpire who stopped play):
 - (i) signals the holding of time, with one arm held straight in the air, makes eye contact with the Timekeeper and simultaneously blows the whistle;
 - (ii) notes the position of the ball without picking it up or holding it;

- (iii) following the stoppage, signals the restart of play with one arm held straight in the air, makes eye contact with the Timekeeper and simultaneously blows the whistle.

4.3 During any stoppage, the Umpires:

- (i) maintain oversight of the Court, the players and Team Benches as well as the incident for which play was stopped;
- (ii) allow Team Officials from both teams to go to the Side Line for coaching and allow bench players to approach the Side Line if coaching occurs;
- (iii) allow Team Officials from both teams to go to the Side Line for the purpose of hydrating players but ensure that drink bottles are kept off the Court;
- (iv) ensure play restarts as soon as conditions are correct and within any time limits that govern the stoppage.

4.4 During any stoppage for injury/illness or blood the Umpires:

- (i) check that all players except the injured/ill player remain on the Court;
- (ii) allow both teams to make substitutions and/or team changes as permitted by the Rules (Rule 6.1.1 and Rule 7.1(v)), provided this is done within the time allowed for the stoppage.

5. Stoppages for Injury or Illness

5.1 First injury per team, per quarter/half/extra time

- (i) the controlling Umpire walks to a position on the team bench Side Line in order to have a clear view of the injury area together with one of the teams and its team bench; the co-Umpire moves to a position on the same Side Line that provides adequate visual coverage of the rest of the Court, the opposing team and its team bench. The controlling Umpire has 'right of way';
- (ii) the controlling Umpire checks that the injured/ill player is receiving treatment/attention from Primary Care personnel or recommences play;
- (iii) the Umpires allow only Primary Care Person/s onto the Court to treat the injured/ill player (any designated Primary Care Person may go onto the Court). Other players (from either team) who are injured/ill may receive treatment, but the length of the stoppage is determined by the treatment required by the player for whom play stopped;
- (iv) if the controlling Umpire has not already restarted play, the Timekeeper notifies the Umpire/s when 30 seconds and when 10 seconds remain of the maximum of 2 minutes allowed.

5.2 Subsequent injuries per team, per quarter/half/extra time

- (i) both Umpires remain on their respective Side Lines during the stoppage and they work together to ensure that conditions are correctly maintained;
- (ii) the Umpire/s ensure that the injured/ill player leaves the Court immediately and within the time allowed (30 seconds); if necessary, the player may be assisted to leave the Court by Primary Care Person/s;
- (iii) the Timekeeper notifies the Umpire/s when 10 seconds remain of the 30 seconds allowed for the player to leave the Court.

6. Umpire Called Stoppages

6.1 'Umpire called stoppages' may be for:

- (i) blood when no on Court player has called time; in this case, 'normal injury procedures' apply (including Primary Care Person/s being allowed on Court and substitutions and/or team changes being permitted); or
- (ii) an emergency (eg relating to equipment, Court, weather); no substitutions or team changes are allowed and no Team Official is allowed on the Court.

6.2 The Umpires decide the most appropriate positions from which to observe the Court, the players and team benches as well as the incident for which play was stopped. The 'controlling Umpire' takes right of way in position.

- 6.3 The Umpires decide the length of such stoppages and ensure that play is restarted as soon as possible.
- 6.4 Wherever possible, the Timekeepers and the Team Officials are informed at the earliest opportunity of the expected length of such a stoppage.
7. During Play
Throughout play, each Umpire:
- 7.1 works closely with the co-Umpire by being positioned and ready for an appeal (along the Side Line and just beyond the transverse line of the co-Umpire);
- 7.2 indicates each Centre Pass immediately after each goal is scored but the controlling Umpire calls the Centre Pass;
- 7.3 is positioned to conduct any Toss Up awarded (a Toss Up is taken by the nearer Umpire);
- 7.4 supports the co-Umpire with eye contact, subtle appeal and response.
8. End of Play
- 8.1 At the end of each quarter (including the end of the match) the Timekeeper indicates 'time' by pressing both Umpire Alert Units simultaneously.
- 8.2 The controlling Umpire immediately turns to make eye contact with the Timekeeper, while simultaneously blowing the whistle and raising one arm straight up in the air; in the event that a Penalty Pass/Shot has been awarded, play continues until the penalty has been completed (refer Rule 2.4).
- 8.3 If the controlling Umpire does not respond promptly, the co-Umpire follows the same steps to signal the end of play.
- 8.4 If neither Umpire responds promptly, then the Timekeeper advises the Umpires by audible signal.
- 8.5 If the venue set-up does not permit both Umpire Alert Units to be activated simultaneously, the Umpire on the Score Bench side of the Court will be alerted first to end play.
9. Intervals
- 9.1 At the end of each quarter/half the two Umpires meet mid-court and walk off the Court together.
- 9.2 While walking off, the Umpires verify the next Centre Pass with each other. When the Umpires reach the Official Bench, they confirm with the Scorers which team has the next Centre Pass to restart the game (first, second and third quarters). (It is considered good practice to re-check the Centre Pass when returning to the Court.)
- 9.3 If there has been any activity on the Court during the interval, the Umpires recheck the Court and its surrounds at an appropriate time before play restarts to ensure a safe playing arena.
- 9.4 When indicated to do so by the Timekeeper, the Umpire on the Official Bench side blows 30 seconds and 10 seconds whistles (if either team is not on court) and then moves into position for the restart of match.
10. Reserve Umpire
- 10.1 Before the match the Reserve Umpire ensures the Umpire Alert Units and any television microphones are sourced and given to the Match Umpires.
- 10.2 At all times the Reserve Umpire is aware of the surrounds of the Court and the needs of the Umpires on Court, responding to either as required.
- 10.3 During the match the Reserve Umpire:
- (i) is seated on the Umpires' Bench (located beside the Official Bench);
 - (ii) remains alert and does not undertake any duties other than those directly related to the match;
 - (iii) is ready to take the Court at any time in the event of injury/illness to either of the Match Umpires (any changeover should be made with minimum disruption to the match);
 - (iv) ensures any player who is suspended from play is seated on the Umpires' Bench and, when notified by the Scorer/Timekeeper/Bench Manager, advises the player that the period of suspension has concluded;

(v) ensures any player ordered off the Court returns to the appropriate team bench.

10.4 During an interval the Reserve Umpire:

(i) looks after the Match Umpires by ensuring full drink bottles, towels etc are available;

(ii) maintains observation of the Court if the Match Umpires leave the Court.

10.5 After the match the Reserve Umpire ensures that Umpire Alert Units and television microphones are returned to source.

10.6 The Reserve Umpire may assist with or undertake duties delegated by the Match Umpires; these may include checking the Court and/or equipment (including the Umpire Alert Units) prior to the match or during an interval, being present when the Captains toss or inspecting the players prior to the match.

11. Whistles

The following whistles are used to distinguish from the whistle for an infringement:

11.1 Warning whistles before play is to restart:

(i) 30 seconds - medium whistle roll;

(ii) 10 seconds - more urgent whistle.

11.2 Start of play (beginning of quarter/half or following stoppage):

slightly longer whistle than for an infringement.

11.3 Stoppage for injury/illness:

medium whistle roll.

11.4 End of quarter/game:

long whistle roll.

12. Official Bench

12.1 The Official Bench consists of two (2) Scorers and two (2) Timekeepers who are seated together. A Bench Manager may also be seated with these officials or positioned nearby.

12.2 Other event officials are seated separately, apart from the Official Bench.

12.3 Detailed instructions for Bench Officials are published separately in the IFNA Bench Officials Manual.

Fitness Testing

Procedures and Information

- All New Zealand Umpires who are wishing to be assessed and/or to be appointed to NNZ events are required to provide current Yo Yo Test results (*Appendix S & U*)
- All Regional Umpires are required to complete the Yo Yo test prior to being screened for the NZ B or C Award
- The Yo Yo test must be carried out and verified by approved personnel (*Appendix T*)

A guide to the level required in the Yo Yo test is:

Umpire Level	Yo Yo Test Level
Umpires prior to screening for NZ C and NZ B	13.3
All Umpires applying for NNZ events (U17, U19/21, NZSS, NZC)	14.5
Centre, Regional & NZ Umpires not applying for events recommended levels	13

Netball New Zealand Responsibilities

- Set all dates relating to the fitness testing
- Provide the Fitness Testing Guidelines (*Appendix S*)
- Provide a generic fitness programme

Regions Responsibilities

- Provide a fitness programme including testing for all New Zealand umpires in their Region.
- Appoint approved fitness personnel to carry out this programme and testing. Return Fitness Testing Panel Notification Form to NNZ by February 15th annually (*Appendix T*)
- Maintain a data base of fitness results and send the accumulated results to NNZ at the set times

Fitness Tester Responsibilities

Duties of Fitness Testers

- Test umpires according to the Fitness Testing Guidelines (*Appendix S*)
- Provide test result data as requested by the Region (*Appendix U*)

Requirements of a Fitness Tester

- Must have a thorough understanding of the requirements of the Yo Yo test
- Must be approved by NNZ

Dates for Fitness Testing

To ensure NZ Umpires have current Yo Yo Test results for events, qualifying, endorsements and upgrades NNZ requires Regions to test umpires just prior to the following dates annually:

1 March 15 June 1 September

Umpiring Resources

Netball New Zealand has the following umpiring resources available. These resources with a product code are available from Sports Distributors Ltd. www.sportsdistributors.co.nz
For further information, a full list of resources and current price list please check the NNZ website: www.netballnz.co.nz

Product Code	Resource
NB 390	Facing the Challenges in Umpiring
NB 378	International Rule Book
NB 376	Netball The Rules Explained
NB 398	Young Umpires programme
NB 385	Umpires Log Book
NB 400	NZ Umpire Key Performance Report
NB 401	Regional Umpire Key Performance Report
NB 402	Centre Umpire Key Performance Report

These resources are available from the Region:

- Level 1 NNZ Centre Umpire Coaching Programme
- Level 2 NNZ Regional Umpire Coaching Programme
- Level 3 NNZ NZ Umpire Coaching Programme
- NNZ Theory Resource

Many Regions and Centres have developed excellent theory and practical resources. Please make individual contact or contact your Umpire Co-ordinator for further information.

High Performance Umpiring

An objective in NNZ's 2009 – 2012 High Performance (HP) plan states the need to increase umpiring depth and quality. The HP plan recognizes that there are now more opportunities both domestically and internationally for elite umpires however, identifying and retaining them are key issues impacting on NNZ's HP umpiring depth. In addition, a long term development approach with an integrated Sport Science component and coaching of umpires is vital for ensuring the standard of elite umpiring in NZ can be maintained and is world leading. NNZ recognizes that the full implementation and further development of the structure will take time and resources.

High Performance Umpiring Objectives

- To increase the number and capability of IUA umpires
- To increase competition for places in the national umpiring squads
- To provide quality national umpire development programmes
- To have the best umpires in the world

National Umpiring Squads

Umpires appointed to this squad:

ANZ CHAMPIONSHIPS (ANZC) SQUAD

- will normally hold a current IUA (other umpires who show a very high performance level may also be included)
- must have shown a high standard of performance either on previous ANZC or equivalent event
- will be offered either a Tier 1 or Tier 2 contract by TTNL (tier level will depend on performance level and experience)
- Identified umpires from the National A squad may be selected on an annual basis into an Extended ANZC Squad to provide additional umpiring personnel for ANZC

NATIONAL A SQUAD

- Umpires who are assessed as possible IUA in 3 years
- Likely ITID
- Maximum time in the squad - 3 years*
- Up to 6 to be included

NATIONAL DEVELOPMENT SQUAD

- Umpires who are assessed as possible IUA in 5 - 6 years
- Maximum time in the squad - 3 years *
- Up to 6 to be included

NEW ZEALAND TALENT DEVELOPMENT (NZTD) U19 PROGRAMME

- Promising umpires under 19 years of age
- Umpires with talent and potential to gain higher honours with the Regional Theory qualification as the minimum requirement
- Regions select 4 to attend NZTD cluster days – total of 48 umpires
- Up to 8 selected to attend NZSS trials
- Maximum time in the squad – 3 years

NB: This time frame may be extended for individual umpires should NNZ consider inclusion benefits the depth and quality of the squad and programme

National Umpiring Squads Selection Criteria

Whenever selecting the National squads, the various selection panels shall apply the following competencies, personal qualities and other considerations:

- (a) Core Umpiring Competencies:
 - Demonstrates understanding of umpiring protocols
 - Displays competence in umpiring techniques
 - Demonstrates consistency and accurate application of rules under pressure
 - Shows ability to read play and manage game effectively
 - Commitment to achieving and maintaining required fitness levels
 - Shows potential and capability to represent NZ at the highest level

- (b) Core Personal Qualities:
 - Strong work ethic
 - Resilience
 - Coach ability
 - Shows discipline on and off the court
 - Shows ability to withstand pressure on and off the court
 - Consistency and adaptability
 - Ability to serve as a role model for others

- (c) Consideration may also be given to
 - The umpire's previous performance history
 - Effectiveness to contribute as part of a group
 - State of fitness, health and well being
 - Availability
 - Succession planning and depth in squad numbers

National Umpire Squad Selections

The National Squads will be selected annually by the various Panels and National Umpire Squad Coaches. The squads will normally be announced in the week following the NZ Secondary School Championships.

ANZC Umpiring Panel

- The ANZ Championships is deemed to be an 'international tournament' and thus this panel consists of International Testing Panel (ITP) members and cadets
- This panel will select in consultation with the ANZC Squad Manager, the ANZC Umpire Squad
- ANZC Panel members provide coaching support for the ANZC Umpire Squad during the ANZC and are responsible for appointing squad umpires to semi-finals and finals.

NZ Umpiring Panel (NZUP)

- The NZUP will select in conjunction with National A and National Development Squad coaches, the National A and National Development Squads
- The NZUP is an important component of NNZ's umpiring structure, details concerning the aims and objectives and the makeup of the panel can be found in the Panel section of The Umpiring Excellence Manual
- The NZUP will be given opportunity to work alongside the ANZC Panel during the ANZC in a professional development role
- The NZUP assesses and supports (coaching / mentoring) the performances of the National A and National Development squad umpires during the season

National Umpire Squad Coaches

NNZ will appoint coaches to all of the National Umpire squads. The appointments are for a 2 year period with the

following key responsibilities:

ANZC Manager

- Responsible for the organization, coordination and well-being of the ANZC Umpire Squad and shall work collaboratively with the ANZC Panel (including contributing to selection of squad umpires for semi-final and finals).

National A Coach

- Responsible for the preparation, coaching and selection (in conjunction with the NZUP) of the National A Umpire Squad

National Development Coach

- Responsible for the preparation, coaching and selection (in conjunction with the NZUP) of the National Development Umpire Squad

National Talent Development Squad Coach

- Responsible for the preparation, coaching and selection a squad of up to 8 umpires from the regional NZTD clusters to attend the NZSS programme

National Umpire Squad Coordinator

- A part time role (2 days per week) that is responsible for coordinating, implementing and supporting strategies that meet NNZ's High Performance umpiring objectives.

IUA

- The International Umpires' Award (IUA) is an IFNA award. ITP members are responsible for assessing this award. Umpires must first be screened for this award before being assessed
- The award is reassessed every four years

International Appointments

- The Match Advisory Panel of IFNA will appoint umpires to international matches and IFNA events
- Funding for these appointments will be based on equal division between the countries involved unless otherwise agreed
- National Squad umpires may be appointed to warm up matches for tests, national team training camps and trials (this may be in conjunction with visiting international umpires). Appointments will be made on geographical location, costs and development benefits

National Appointments

APPOINTMENTS TO EVENTS

The New Zealand Umpires Panel (NZUP) will recommend the appointment of umpires to the following National Events.

- New Zealand Championships
- New Zealand Age Group Championships U19/U21
- New Zealand Secondary Schools Championships

The NZUP will confirm the Region's recommendation of umpire appointments to the

- New Zealand under 17 Championships

Criteria

The following factors may be considered

- ability of umpire to progress on the accreditation pathway
- succession planning
- fitness, health and well being
- current form
- Oceania Development
- Such other factors as the NZUP consider at their discretion to be relevant and appropriate
- Regional representation

Every effort will be made to advise umpires of appointments at least six weeks prior to the event date.

Reserve Umpires will be appointed to each event and advised.

In any year Netball New Zealand may invite umpires from other countries to attend events. This includes NZ residents living overseas.

As a guideline the following qualifications will be the minimum where there are sufficient suitable applicants:

NZ Championships	NZ B or NZ Squad member
NZ AGC U19/21	NZ C Award
NZSS	NZ C Award
U17	NZ Regional Award

As current form is a consideration NZ Award umpires may be appointed.

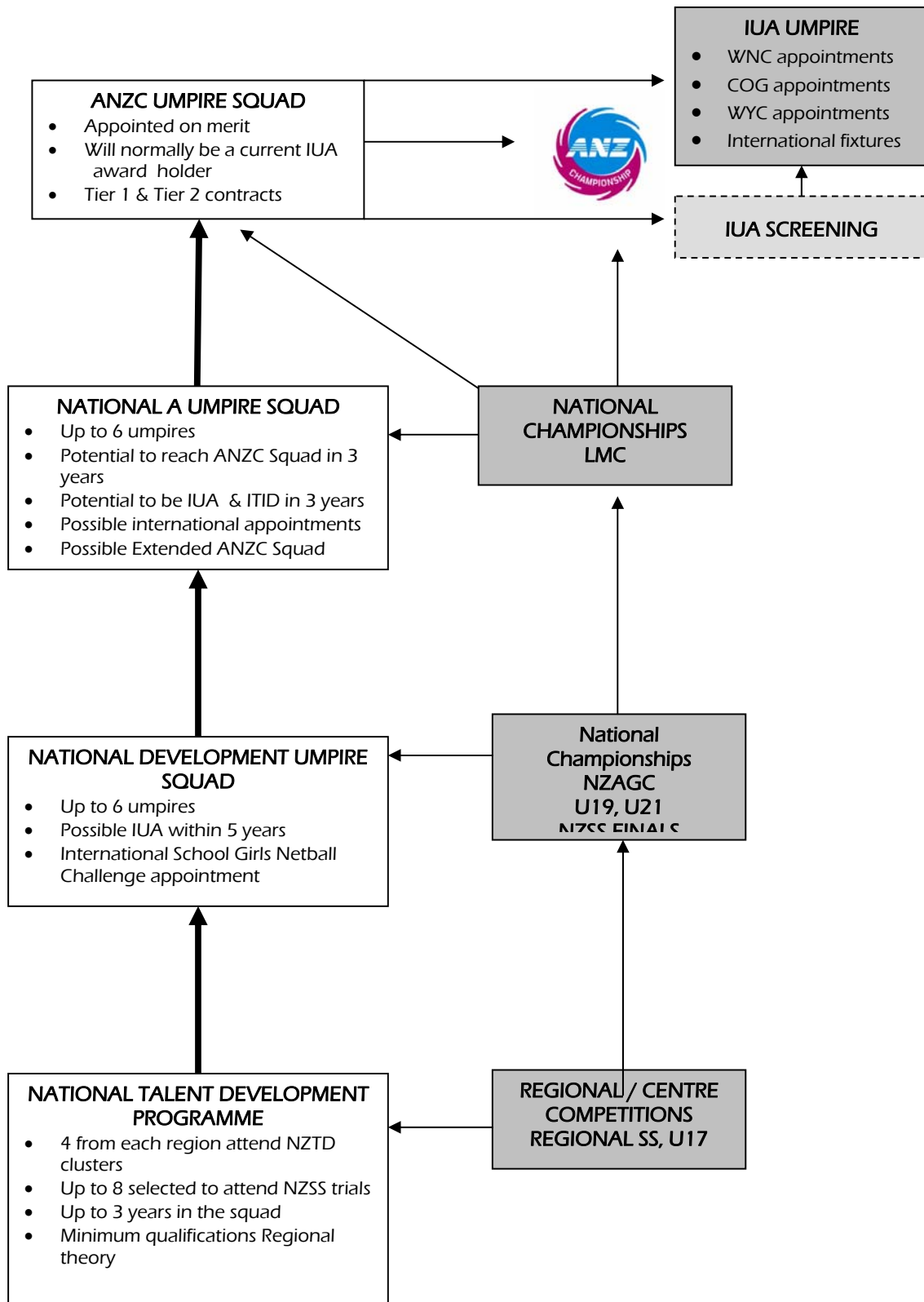
NB: NNZ acknowledges the Lois Muir Challenge is the responsibility of Regions. However the recommended minimum level of qualification for umpires appointed to those games is NZ C Award.

Application process

- Umpires will apply to Regions by 3rd Monday of March to umpire at
 - NZ Championships
 - NZ Age Group Championships U19/21
 - NZ Secondary School Championships
- Regions will forward these applications to NNZ by March 31. *(Appendix V)*
- Regions will provide rankings for the applicants from their region along with supporting information which should include
 - Experience and previous event history
 - suitability for event applying for
 - response to coaching
 - openness to development
 - fitness test result
- NZUP will endeavour to observe all applicants before appointments are made. Umpires may be required to travel in order to facilitate this viewing.
- Regions will provide list of events that are available for applicants to officiate at so NZUP schedule can be arranged. This will be done in conjunction with the Region's game allocation personnel and every effort must be made by the region to limit the amount of travel required by NZUP.

Umpires for NZ Under 17 Championships will be recommended by the Region and confirmed by the NZUP member responsible for that Region. They shall be forwarded to NNZ by 30 May. Fitness test results must be forwarded by June 15.

HIGH PERFORMANCE UMPIRE PATHWAY



NB: NNZ acknowledges that umpires develop at varying rates and therefore may enter the pathway at different levels.

HIGH PERFORMANCE STRUCTURE OVERVIEW

SQUAD	DESCRIPTION	EVENTS	DEVELOPMENT & SUPPORT
ANZC	TIER 1 <ul style="list-style-type: none"> Appointed on merit from previous year's ANZC (score < 20) Current IUA 	ANZ Championships International appointments <ul style="list-style-type: none"> Test Series, World Netball Championships (WNC) Commonwealth Games 	ANZC Umpire Squad Manager Oversee programmes, act as mentor/support Monitors & supports progress ANZC Panel appointed from ITP members and ITP Cadets NZ Panel Work alongside ANZC Panel in professional development role and within specified costs
	TIER 2 <ul style="list-style-type: none"> Screened IUA ITID 	ANZ Championships NNZ National Events <ul style="list-style-type: none"> National Championships Lois Muir Challenge International appointments <ul style="list-style-type: none"> Test Series, WNC, WYC, Oceania events 	Activities Pre-season ANZC tournaments Workshop Mentoring - umpires in National A & Development squads.
NATIONAL A	<ul style="list-style-type: none"> Umpires who are assessed as possible IUA within 3 years ITID also possible in this timeframe Up to 6 to be included Possible selection into ANZC Extended Squad 	ANZ Championships <ul style="list-style-type: none"> Reserve on RR May umpire (if required) under agreed circumstances NNZ National Events <ul style="list-style-type: none"> NC LMC NZAGC International appointments <ul style="list-style-type: none"> May be appointed to Oceania events 	NZA Squad Coach & Development Squad Coach Coordination of camp programmes and for overall coaching & development for their respective squad NZ Panel May be allocated an umpire for oversight & guidance in conjunction with the squad coach. Responsible for ensuring the umpires have a programme of suitable games at National events ANZC Umpires Act as mentors for other National umpire squads; Tier 1: two umpires each; Tier 2: one umpire each
NATIONAL DEVELOPMENT	<ul style="list-style-type: none"> Promising umpires who are assessed as possible IUA in 5 - 6 years Up to 6 to be included 	NNZ National Events <ul style="list-style-type: none"> NC NZAGC - U21, U19, U17 NZSS Finals International appointments <ul style="list-style-type: none"> Trans Tasman SS May be appointed to Oceania events 	Activities Camps Workshop Mentoring – umpires selected for NZSS Trial camp
NZTD	<ul style="list-style-type: none"> U19 umpires with talent and potential to gain higher honors Up to 8 will be selected Max time in the squad –3 years 	Centre and Regional competitions and events <ul style="list-style-type: none"> Regional Sec Schools 	NZTD Umpire Coach Responsible for the delivery of NZTD umpire programme and selection of the umpires to attend the NZSS trial camp Activities NZTD Cluster days NZSS Trial camp

New Zealand Umpire Appeal

Procedures and Information

- The Appeal Form is intended for use if there is an appeal on procedural irregularities of any of the procedures outlined in this manual
- The person appealing must fill out all details on the form, (*Appendix X*) attach any supporting papers and return to NNZ as directed within 7 working days of the assessment, appointment, application, selection or theory exam result being notified
- Late or incomplete appeals will not be accepted

Netball New Zealand's Responsibilities

- The Umpire Development Manager/Talent Development Manager shall check the Appeal Forms when they are presented
- Appeal Forms that do not appeal a procedural irregularity will be returned to the sender with a letter of explanation
- The Umpire Development Manager, Talent Development Manager (Theory Moderators if the appeal concerns Theory Exams), shall deal with Appeal Forms which are accepted
- The appellant shall be informed of the result, in writing, within seven working days of receiving
- For any unsuccessful appeal involving a Theory Exam the paper shall not be remarked but returned to the candidate with a letter of explanation
- NNZ shall file all appeal correspondence including a copy of the original script

Note: If any person, for whom this Excellence Manual applies, wishes to appeal any umpire process they should in the first instance appeal to the controlling body for that process. For example a Centre Umpire should appeal to their Centre.