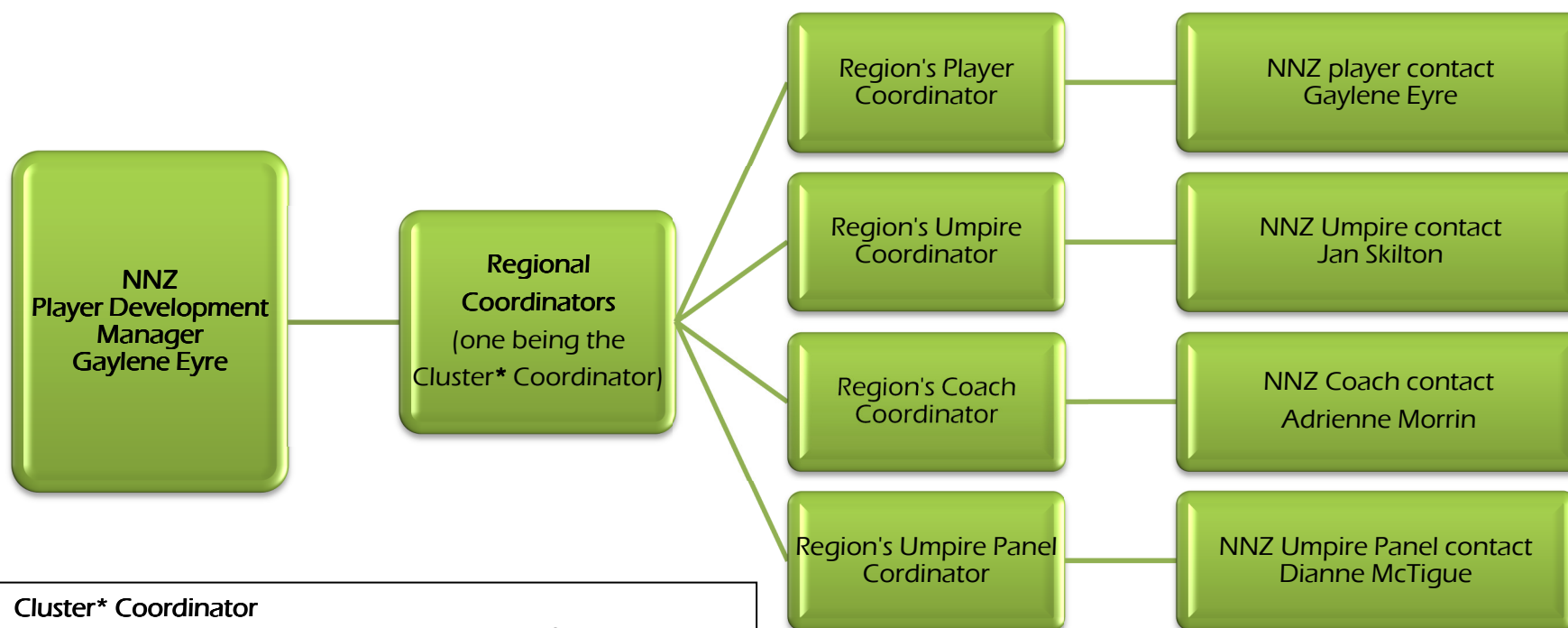




Netball New Zealand Talent and Development Programme Communication Plan



- Cluster* Coordinator**
1. Work with Gaylene Eyre NNZ to identify the appropriate & cost effective cluster venue and make the bookings. (NNZ will cover the venue costs.)
 2. Communicate with other Regional Coordinator in their cluster to confirm arrangements
 3. Provide lunch and morning tea for NNZ staff and presenters.
 4. Provide the equipment on the gear list

Purpose

- To apply a 'whole of sport' approach and regional alignment to programme delivery
- Provide greater depth of content for New Zealand Talent and Development Programme (NZTDP) focusing in High Performance principles
- Establish strategies for ongoing support of talented players and umpires in their regions

Objectives of the athlete (player and umpire) programme

- Increase the pool of talented athletes (players and umpires) for national selection
- Introduce High Performance principles at an earlier age at regional level
- To recognise athletes with potential earlier without discounting late developers
- Provide an incentive for talented athletes to stay in netball
- Introduce and develop specialist skills
- Ensure the flow on of information through coach development

Eligibility - Criteria

The criteria for selecting athletes for this programme are as follows:

- Players must be aged between 15 & 17 years as at 1 January of the year of the programme
- Umpires must be U19 as of 1st of January (as above) and hold a minimum qualification of regional theory
- Athletes must show the potential to perform at an elite level.
- All athletes who are invited must be prepared to commit to both days of the programme
- NNZ will consider the appropriateness for participation if that player is a current NZ Under 21 Squad member
- An athlete's time in the programme is not limited to 1 year. However, they must be selected annually after meeting the regional selection requirements.

Coach Development Programme

NNZ CoachForce will run the coach development aspect of this programme, the coaches of all players will be required to attend the workshop.

NNZ recommend that Regions follow up with the coaches to confirm their understanding of the invitation and to encourage them to attend. This is to ensure the ongoing development of their players and to link the national programme with the regions. If a coach cannot attend then it is recommended the player nominates a caregiver or appropriate alternative who can.

In addition, NNZ recommends that regions invite Representative Age Group coaches, Centre or Regional High Performance or Academy personnel not already involved who would benefit from this coach development opportunity.

Umpire Development Programme

NNZ will run the umpire development aspect of this programme, the coaches of all umpires will be required to attend the workshop.

NNZ recommend that Regions follow up with the umpire coaches to confirm their understanding of the invitation and to encourage them to attend. This is to ensure the ongoing development of their umpires and to link the national programme with the regions. If an umpire coach cannot attend then it is recommended the player nominates a caregiver or appropriate alternative who can.

In addition, NNZ recommends that regions invite any Regional or Centre Umpire Coaches and panel members who are not already involved who would benefit from this umpire development opportunity.

Finances

NNZ to cover any costs related to the following:

- Developing and running the programme
- Presenter costs.
- Paying for the venue

Region to cover any cost related to the following:

- Lunch & refreshments for NNZ Staff and Presenters
- Game equipment required (balls, bibs, cones, first aid kit, ice)
- Regional Coordinator
- Testing for all athletes prior and post of the NZTD weekend.

Athletes are responsible for their:

- Transport to and from the venue
- Lunch, snacks & drinks for the both days – according to nutrition guidelines attached.
- Dinner on Saturday evening
- Accommodation if required

Attending Coaches and Regional personal are responsible for their:

- Transport to and from the venue
- Lunch, snacks & drink for both days
- Dinner for Saturday evening
- Accommodation if required

NNZ CONTACTS:

Players Gaylene Eyre gaylenee@netballnz.co.nz

Umpires Jan Skilton jans@netballnz.co.nz

Coach's Adrienne Morrin adriennem@netballnz.co.nz

Umpire Development Dianne McTigue diennem@netballnz.co.nz

Administration NNZ Marcia Bennett marciab@netballnz.co.nz

Timeline

The Region will:

July

- ❑ Appoint Regional Coordinator (who will liaise with Regional Umpire, Coach and Umpire Panel Coordinator) and notify Gaylene Eyre of coordinators names and contact details

August – September

- ❑ Send out invitation letters and programme to all athletes, coaches and umpire panel
- ❑ Four weeks prior to the cluster notify Gaylene Eyre of 12 players selected by completing the registration form template
- ❑ Four weeks prior to the cluster notify Jan Skilton of 4 umpires selected by completing the registration form template
- ❑ Four weeks prior to the cluster notify Adrienne Morrin of coaches/HP personnel attending by completing the registration form template
- ❑ Four weeks prior to the cluster notify Dianne McTigue of umpire panel personnel and regional personal attending by completing the registration form template

Regional Co-ordinator – prior to the NZTD weekend

- ❑ Yoyo test (six weeks prior) athletes and send results to Gaylene Eyre (players) Jan Skilton (umpires) (Refer to Fitness Testing Guidelines for players and umpires)
- ❑ Complete athlete profiles and pass to NNZ at cluster day.

Cluster Coordinator - On the Day

- ❑ Provide lunch and morning tea for NNZ staff and presenters.
- ❑ Provide the equipment on the gear list

NNZ will:

March

- ❑ Confirm dates for NZTD
- ❑ Book and confirm venue (The location of the programme where possible will alternate between regions)

July

- ❑ Send NZTD packs and programme out to the regions
- ❑ Provide registration and letter templates
- ❑ Market the programme through NNZ Website, NNZ News, CoachForce Newsletter, Netball Umpiring newsletter

On the day

- ❑ Run the programme.
- ❑ Provide a separate booklet for athletes, coaches and umpire panel members